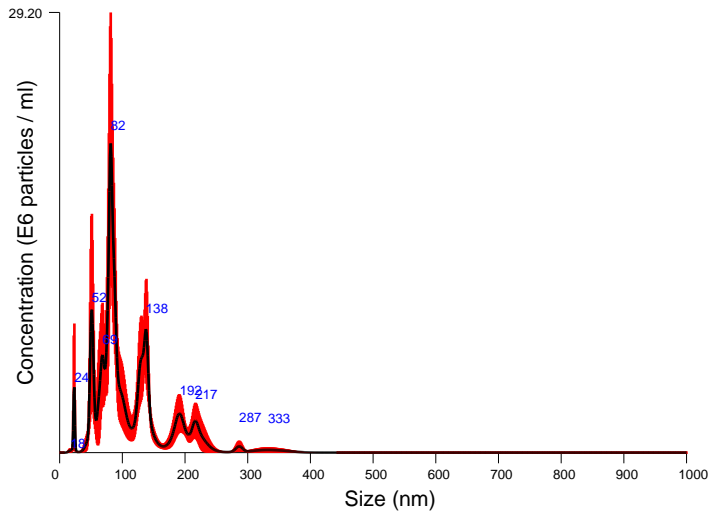


FTLA Size / Concentration graph for Experiment:
GAIA-160804-CO2 2L-10min_30min-



Averaged FTLA Size / Concentration
Red error bars indicate +/- 1 standard error of the mean

Included Files

GAIA-160804-CO2 2L-10min_30min-00
GAIA-160804-CO2 2L-10min_30min-01
GAIA-160804-CO2 2L-10min_30min-02
GAIA-160804-CO2 2L-10min_30min-03
GAIA-160804-CO2 2L-10min_30min-04

Details

NTA Version: NTA 3.0 0068
Script Used: SOP Standard Measurement 11-27-14AM
04Aug2016.txt
Time Captured: 11:27:14 04/08/2016
Operator: Tomioka
Pre-treatment:
Sample Name: Water
Diluent:
Remarks:

Capture Settings

Camera Type: SCMOS
Camera Level: 16
Slider Shutter: 1300
Slider Gain: 512
FPS: 25.0
Number of Frames: 1498
Temperature: 26.4 - 26.6 °C
Viscosity: (Water) 0.857 - 0.860 cP
Dilution factor: 1 x 10e1

Analysis Settings

Detect Threshold: 5
Blur Size: Auto
Max Jump Distance: Auto: 13.1 - 24.9 pix

Results

Stats: Merged Data

Mean: 112.0 nm
Mode: 81.5 nm
SD: 58.4 nm
D10: 53.3 nm
D50: 88.4 nm
D90: 197.4 nm

Stats: Mean +/- Standard Error

Mean: 111.4 +/- 5.9 nm
Mode: 83.4 +/- 14.8 nm
SD: 53.6 +/- 7.0 nm
D10: 60.5 +/- 5.0 nm
D50: 91.5 +/- 5.8 nm
D90: 193.0 +/- 14.5 nm
Concentration: 7.55e+008 +/- 7.13e+007 particles/ml
3.8 +/- 0.4 particles/frame
7.7 +/- 1.4 centres/frame